

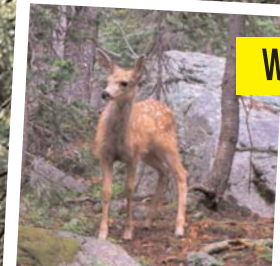
What lies beyond the end of the road?



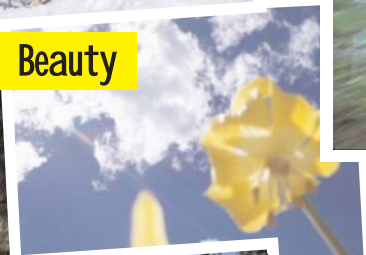
Fun



Tranquility



Wildlife



Beauty



Adventure



Clean water + air



Solitude



Memories



Speak out for our roadless areas!

The White River National Forest has over 640,000 acres of inventoried roadless areas. Under a new public process, Coloradans must defend these roadless areas – or risk allowing them to be opened up to drilling, logging, mining or other development.

Please write a letter...attend the June 21 hearing in Glenwood Springs...or “adopt” a roadless area and see for yourself what lies beyond the end of the road! For more info, go to:

www.wrroadless.org

Citizens for Roadless Area Defense (C-RAD)
Leslie Cook, (970) 948-7221, lesliecook@excite.com